



PRESS CONTACT: Natalie Genter-Gilmore

503.445.3765

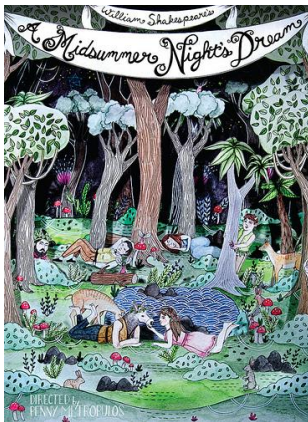
natalieg@pcs.org

M E D I A R E L E A S E

ESCAPE INTO THE MAGICAL WOODS OF SHAKESPEARE'S BELOVED

A MIDSUMMER NIGHT'S DREAM

AT PORTLAND CENTER STAGE



October 24, 2012 – PORTLAND, ORE. Revel in the enchantment of the holiday season in the sparkling forest of Shakespeare's most beloved, magical tale. Portland Center Stage's production of *A Midsummer Night's Dream*, begins preview performances on Tuesday, November 13, opens on **Friday, November 16** and runs Tuesday through Sunday through **December 23**. Tickets **start at \$39**, with discounts available for students and those under 25. Rush tickets are \$20.

"It's a perfect play," says **director Penny Metropolus**. "It has so much joy and truth, it's perfect in every way." As the royals Theseus and Hippolyta prepare to marry, four young lovers from their Athenian kingdom flee to the forest in the wake of parental disapproval. But in the woodland, these lovers' lives are complicated upon crossing paths with feuding faerie royalty. As Oberon and Titania bicker over a changeling child, the mischievous Puck and his sprightly accomplices use herbal spells to hilariously complicate the love-mad quartet's forest idyll. When a group of local rustics rehearsing a play for the Athens wedding also seek the quiet of the forest, the spells and confusions wrought seem unlikely to ever sort themselves out. But this is William Shakespeare at his most magical and most imaginative, and with a little enchantment, as Puck says 'all is mended.' "We hope this play isn't exactly what you've imagined," says Metropolus, "but exactly what you dreamed."

Show times are 7:30 p.m. Tuesday through Sunday, with 2 p.m. matinees on Sundays and select Saturdays and matinees at noon on Thursdays. See the show calendar at www.pcs.org/midsummer for the complete performance schedule. Tickets can be purchased online at www.pcs.org, by phone at 503.445.3700 or by visiting the box office located at 128 NW Eleventh Avenue.

A top-shelf cast of Shakespeare masters, dreamy young lovers and some of Portland's favorite comedic performers populate the Athenian forest of *A Midsummer Night's Dream*. The role of the mischief-making fairy, Puck, will be played by **Daisuke Tsuji**, an Oregon Shakespeare Festival company member recently seen in *Animal Crackers*, *The Imaginary Invalid* and *American Night*. The cast also includes long-time favorite OSF performers **James Newcomb**, as the loveable buffoon Bottom, and **Linda Alper**, as the beleaguered Peter Quince. **Richard Baird, Ty Boice, Dylan Earhart, Joel J. Gelman, Dana Green, Andy Lee-Hillstrom, Damon Kupper, Kayla Lian, Jenni Putney, Tim True** and **Todd Van Voris** complete the all-star ensemble.

This centerpiece of Portland Center Stage's 25th anniversary season is directed by **Penny Metropolis**. The magic- and mischief-filled forest is brought to the stage by Scenic Designer **Michael Vaughn Sims** and Lighting Designer **Diane Ferry Williams**. Costumes are designed by **Deborah M. Dryden**. Sound Designer **Alaric Jans** and Stage Manager **Emily N. Wells** round out the creative team.

Additional support for this production is provided by **US Bank, CTA Labs, Madeline Nelson & Jim Lafky, Judy Kelley** and ***Shakespeare for a New Generation*, a national program for the National Endowment for the Arts in partnership with Arts Midwest**. Portland Center Stage's 2012/2013 season is funded in part by **Umpqua Private Bank**, our lead corporate champion; the **Regional Arts & Culture Council** and **Work for Art**; the **Oregon Arts Commission**; the **Paul G. Allen Family Foundation**; **The Oregonian**, and **Tim & Mary Boyle**. The Mark Spencer Hotel is the official hotel partner for Portland Center Stage.

PORTLAND CENTER STAGE inspires our community by bringing stories to life in unexpected ways. Established in 1988 as a branch of the Oregon Shakespeare Festival, PCS became an independent theater in 1994 and has been under the leadership of Artistic Director Chris Coleman since May 2000. The company presents a blend of classic, contemporary and original productions in a conscious effort to appeal to the eclectic palate of theatergoers in Portland. PCS also offers a variety of education and

outreach programs for curious minds from six to 106, including discussions, classes, workshops and partnerships with organizations throughout the Portland metro area.

THE GERDING THEATER AT THE ARMORY houses a 599-seat Main Stage and the 200-seat black box Ellyn Bye Studio. It was the first building on the National Register of Historic Places, and the first performing arts venue, to achieve a LEED (Leadership in Energy and Environmental Design) Platinum certification. The Gerding Theater at the Armory opened to the public on October 1, 2006. The capital campaign to fund the renovation of this hub for community artistic activity continues.

###